

**Barco portacontenedores**

**Tipo post-panamax**

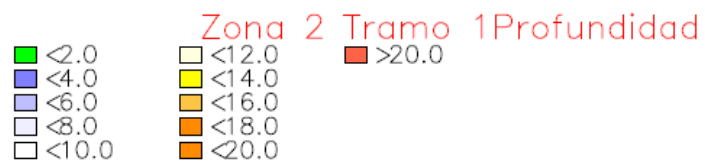
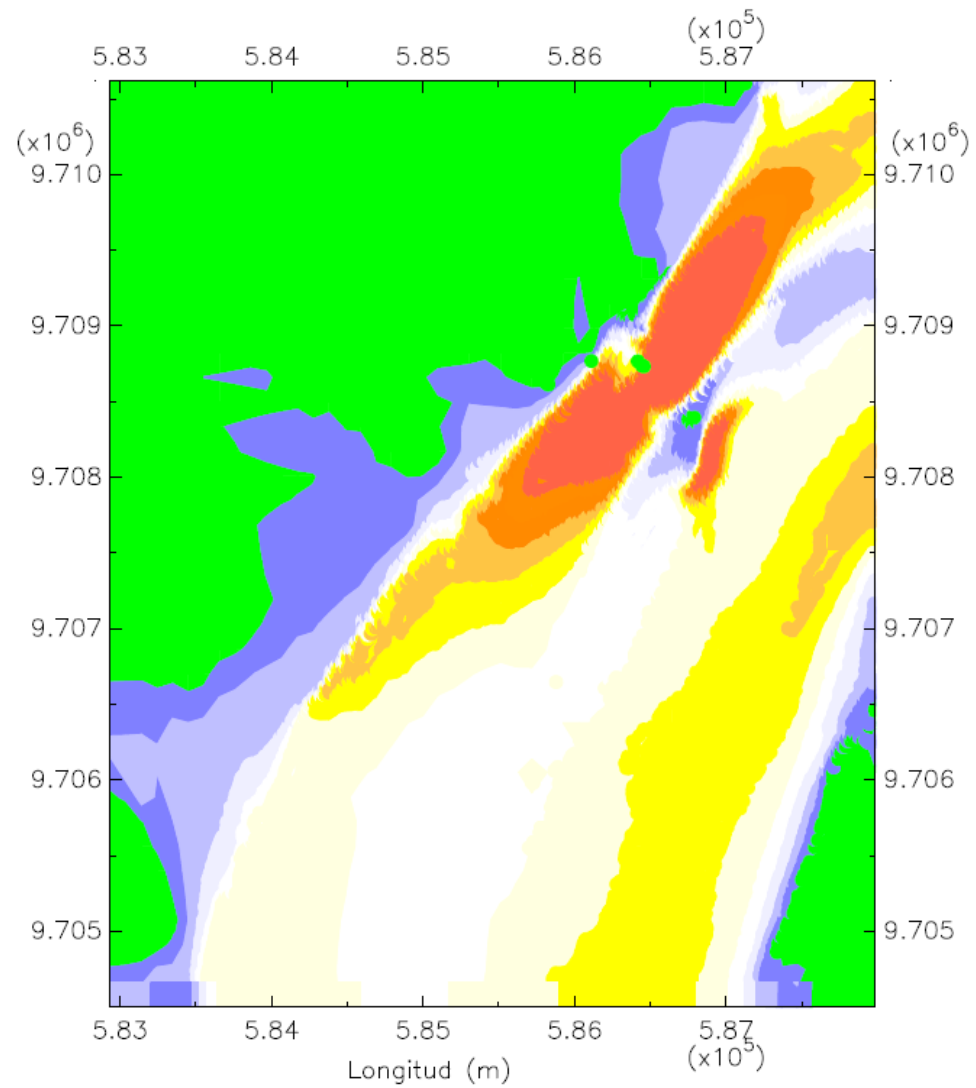
**Eslora: 318.20 m**

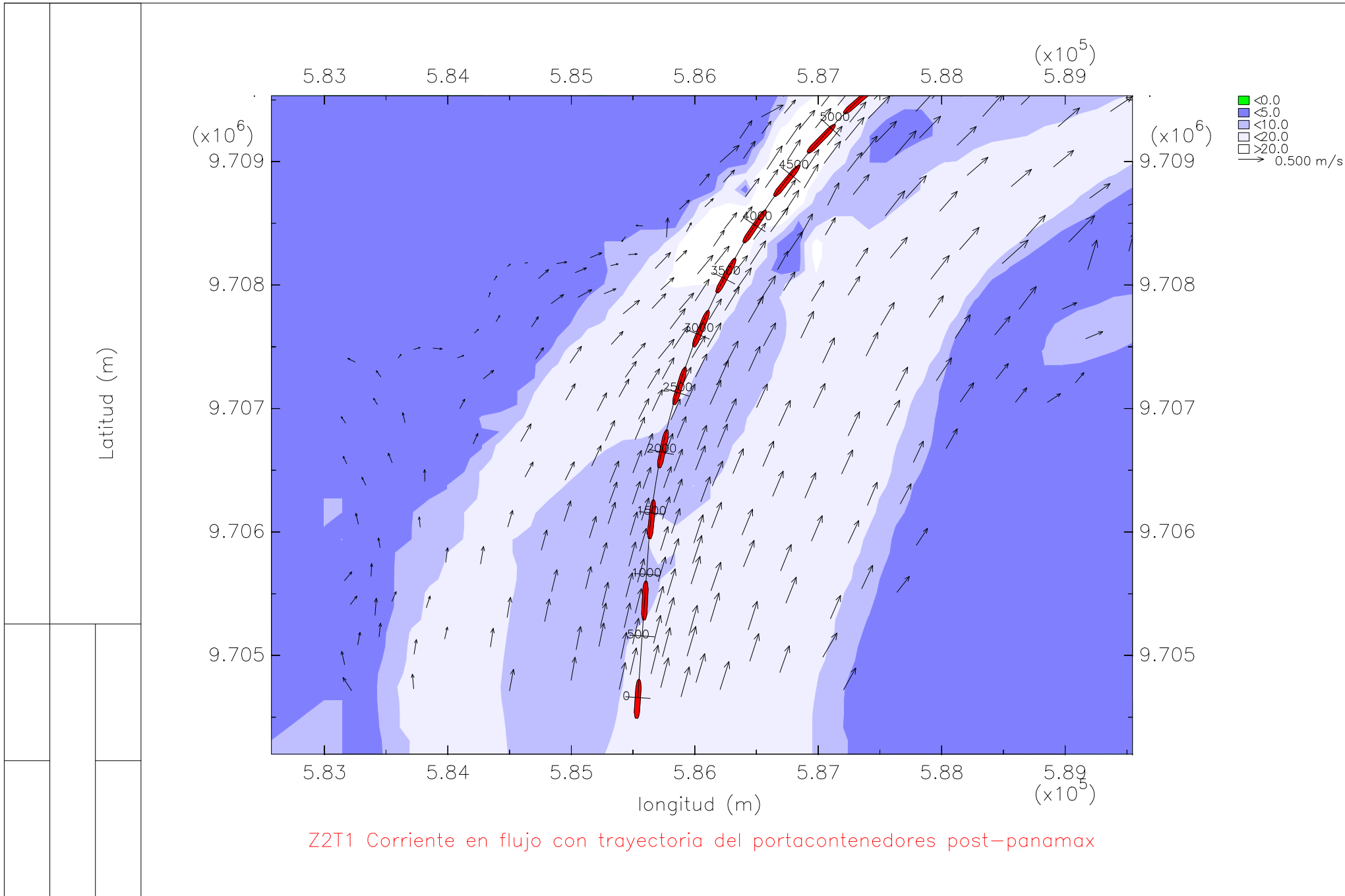
**Manga: 42.800 m**

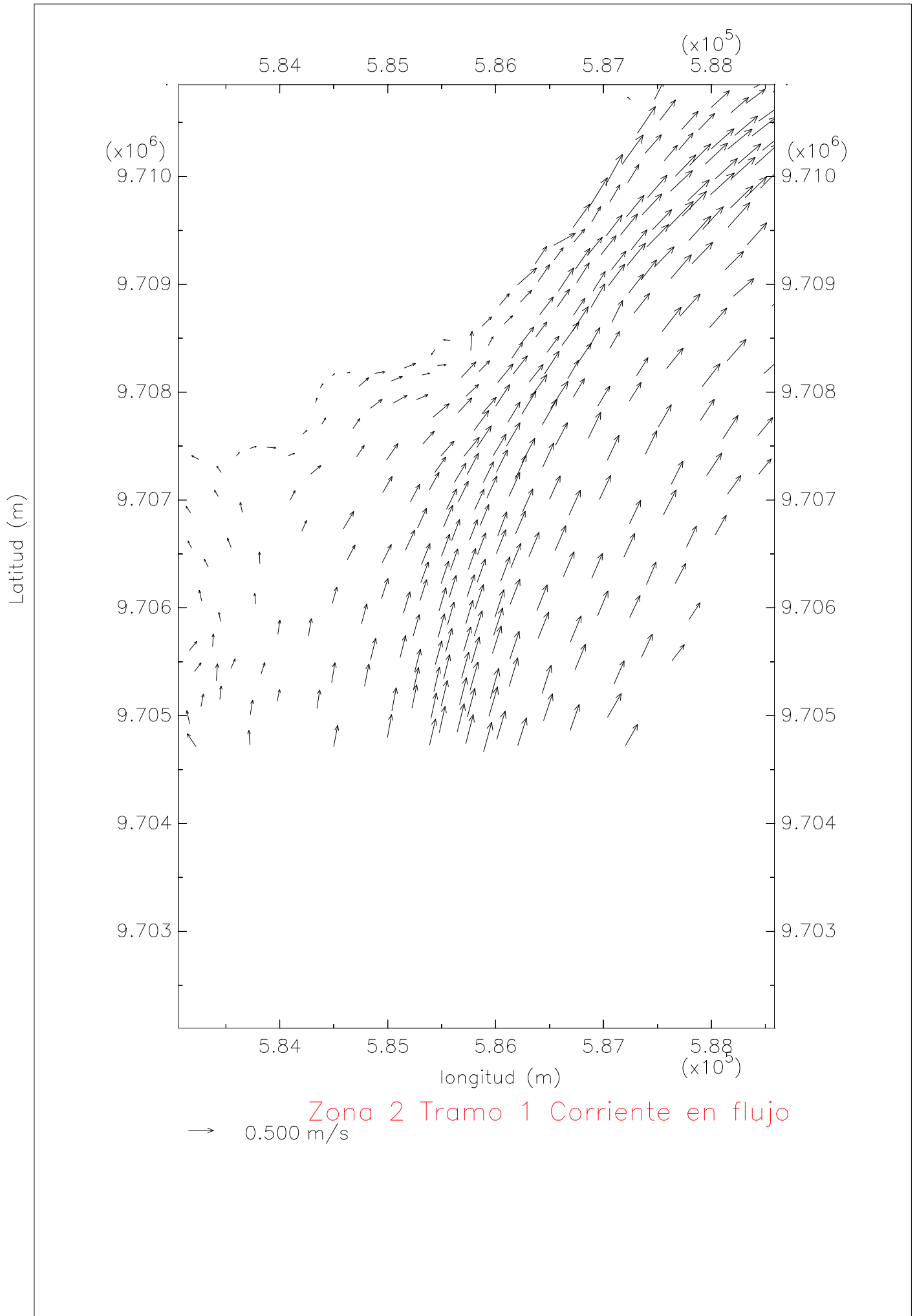
**Calado: 11.60 m**

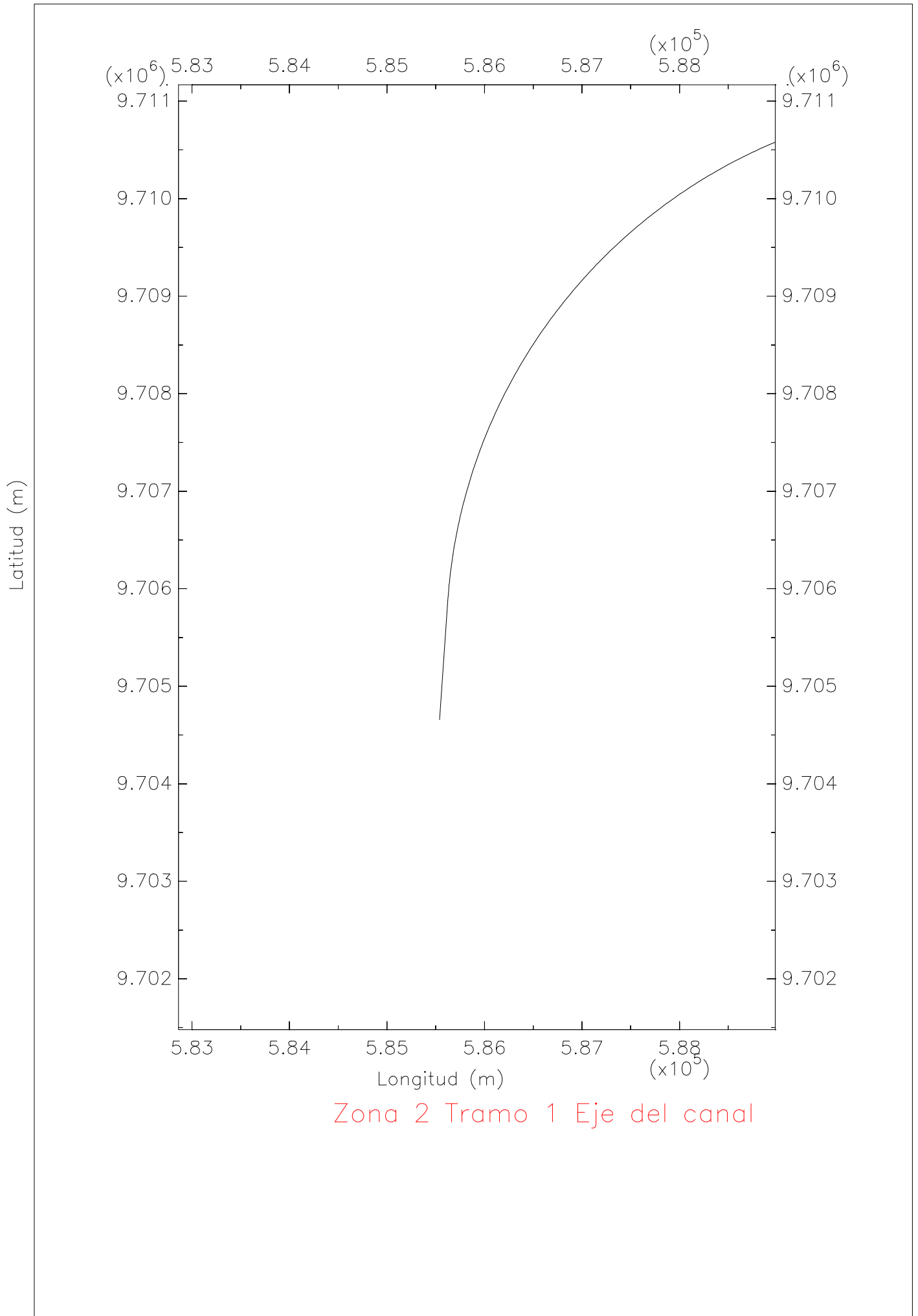
**En la zona 2, tramo 1**

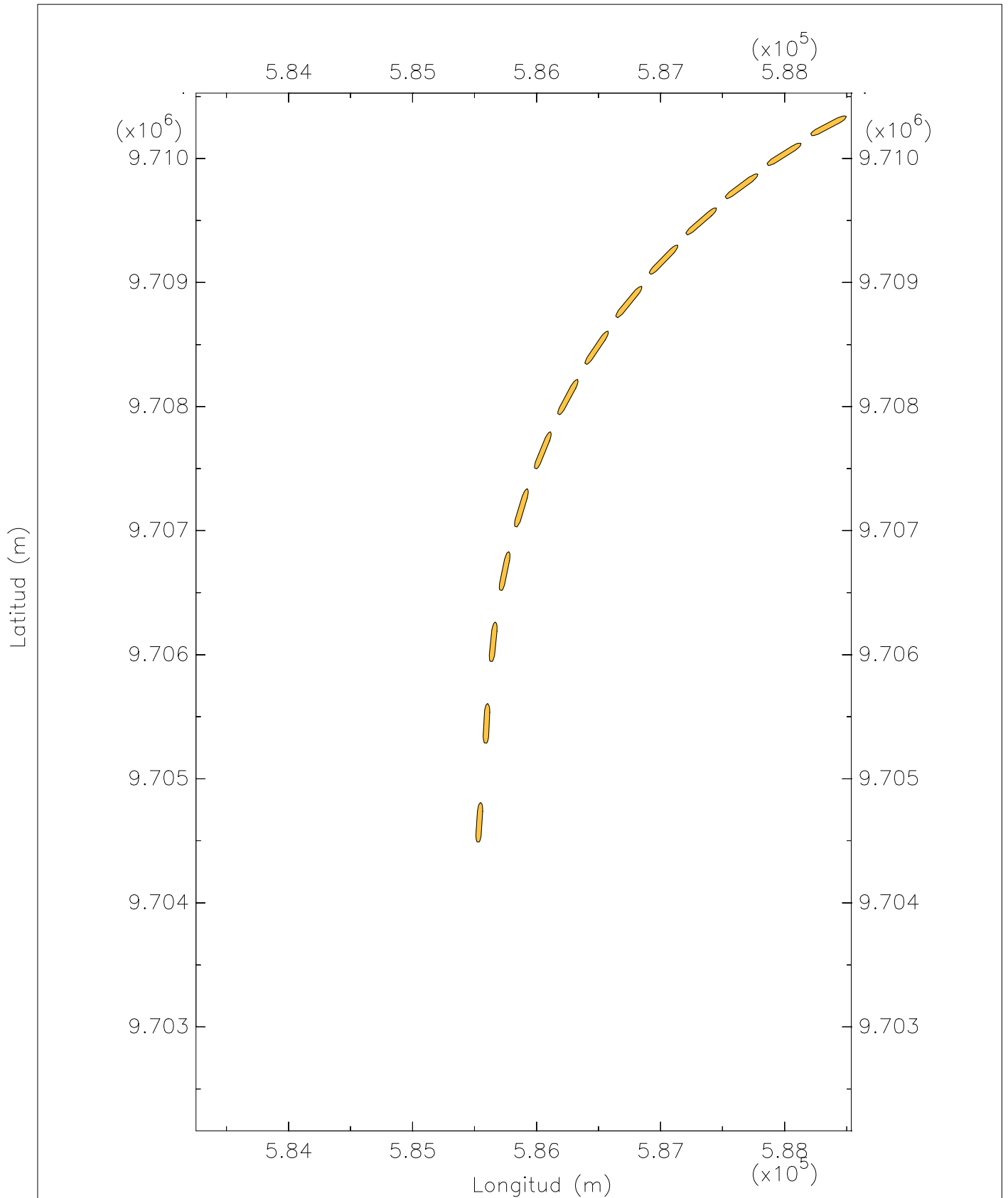
**Bajo condiciones de llenante**



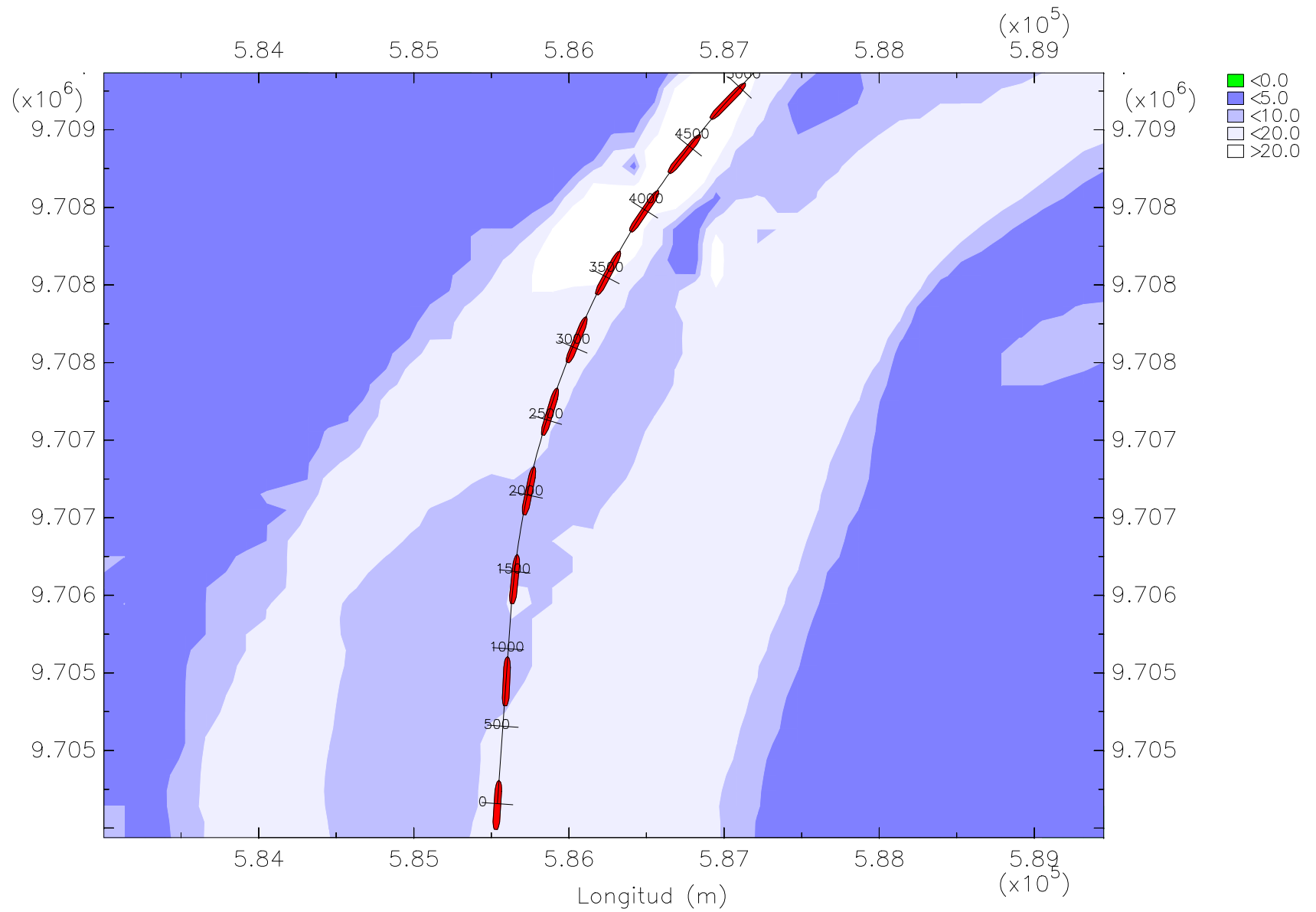








Z2T1 Trayectoria del barco en flujo



Z2T1 Trayectoria del barco portacontenedores panamax en flujo